

NED's Circus Puppet Station!

Create this interactive puppet station for your school carnival or end-of-the-year celebration. Kids will enjoy reenacting parts of NED's adventure and making up some of their own.

Kit contains 5 puppets plus stage instructions and decorations.

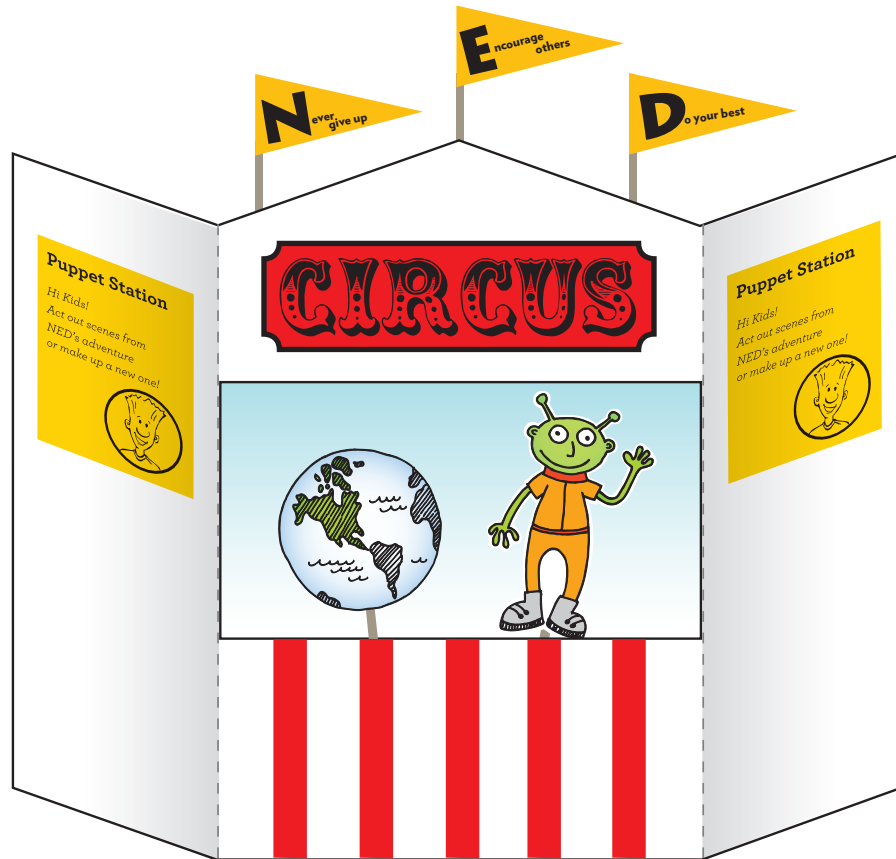


fig. A

Have fun!



What you'll need:

- Student Tri-fold Presentation Board (48" x 36")
- Color Printer
- Laminator (optional)
- Cutting knife and scissors
- 8-1/2 x 11" paper - white and bright colors (*card stock is recommended*)
- Glue or tape
- Craft sticks or popsicle sticks for flags
- 5 wooden dowels or paint sticks for puppet handles

INSTRUCTIONS

Printing...

- Print pages 3-11 on a color printer. (puppets)
- Print pages 12 & 13 on yellow card stock. (N-E-D flags)
- Print page 14-16 on red card stock. (front stripes & circus sign)
- Print 2 copies of page 17 on either white or colored paper. (instructions for side panels)

Cut and paste...

- Cut puppets on dotted line, laminate (optional), glue or tape stick handle to one side of puppet, then tape or glue the back side of the puppet.
- Cut out NED flags, stripes and CIRCUS sign
- Tape craft sticks to the back of the NED flags
- Cut the student presentation board (stage) using fig. B as a guide.
- Attach the CIRCUS sign, stripes and flags instructions to the stage with glue or tape. See fig. A

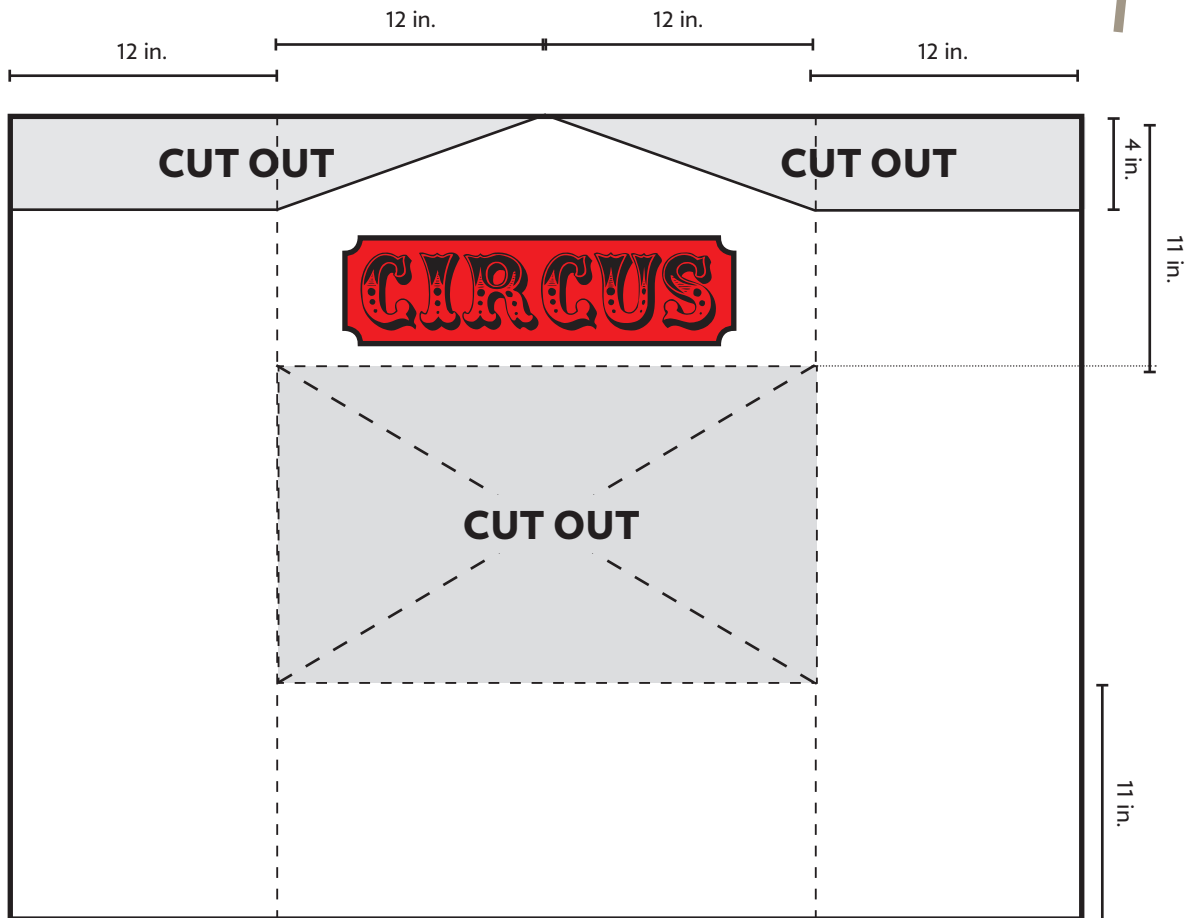
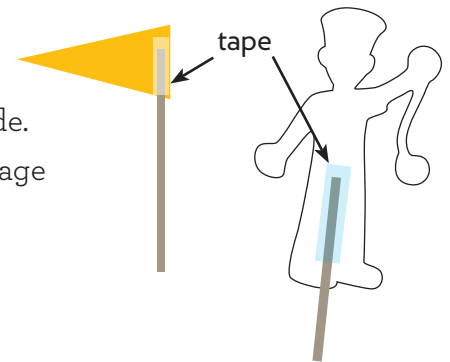


fig. B Cut out guide for stage - Student Presentation Board (48" x 36")

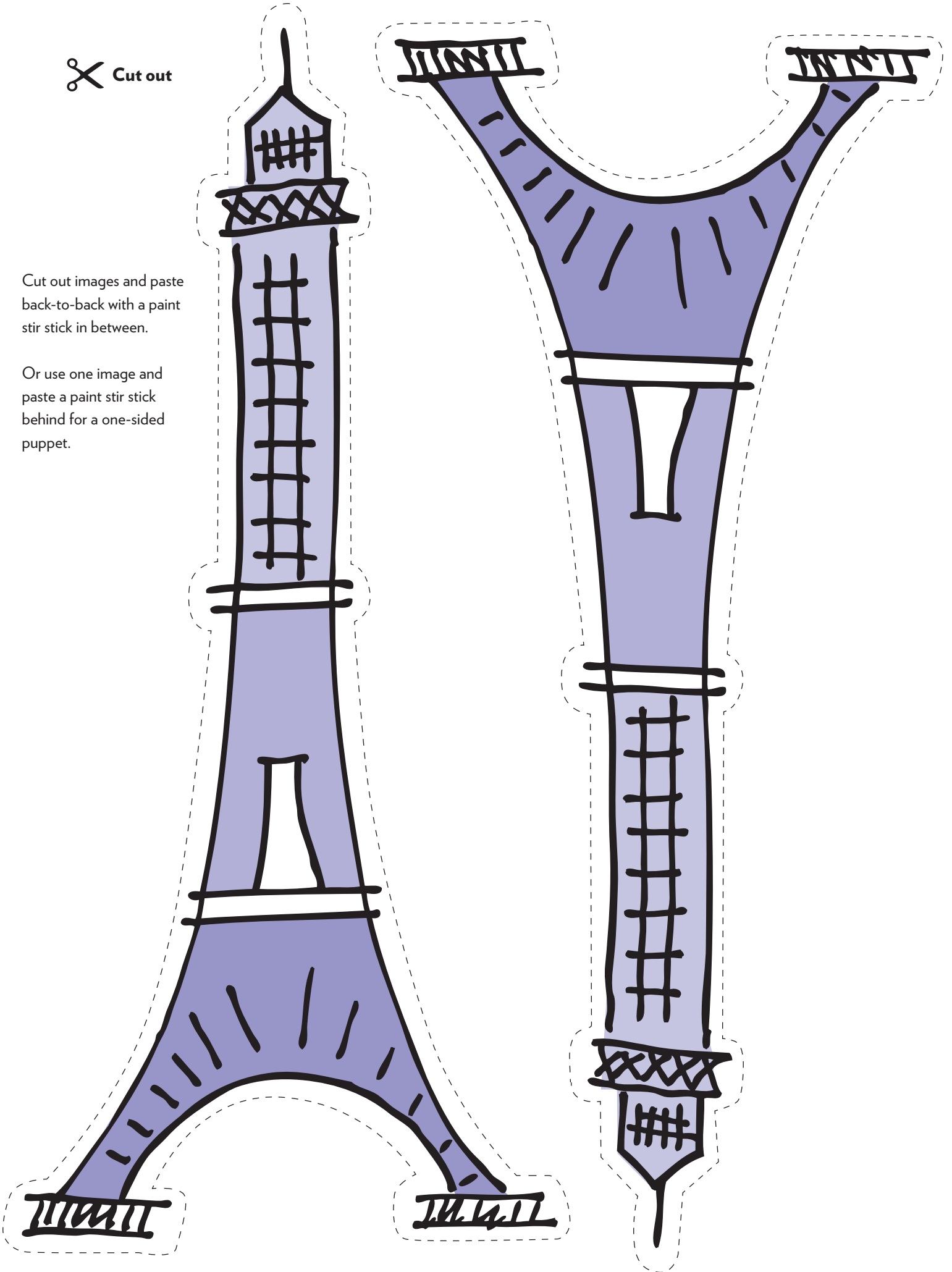
✂ Cut out



 Cut out

Cut out images and paste back-to-back with a paint stir stick in between.

Or use one image and paste a paint stir stick behind for a one-sided puppet.

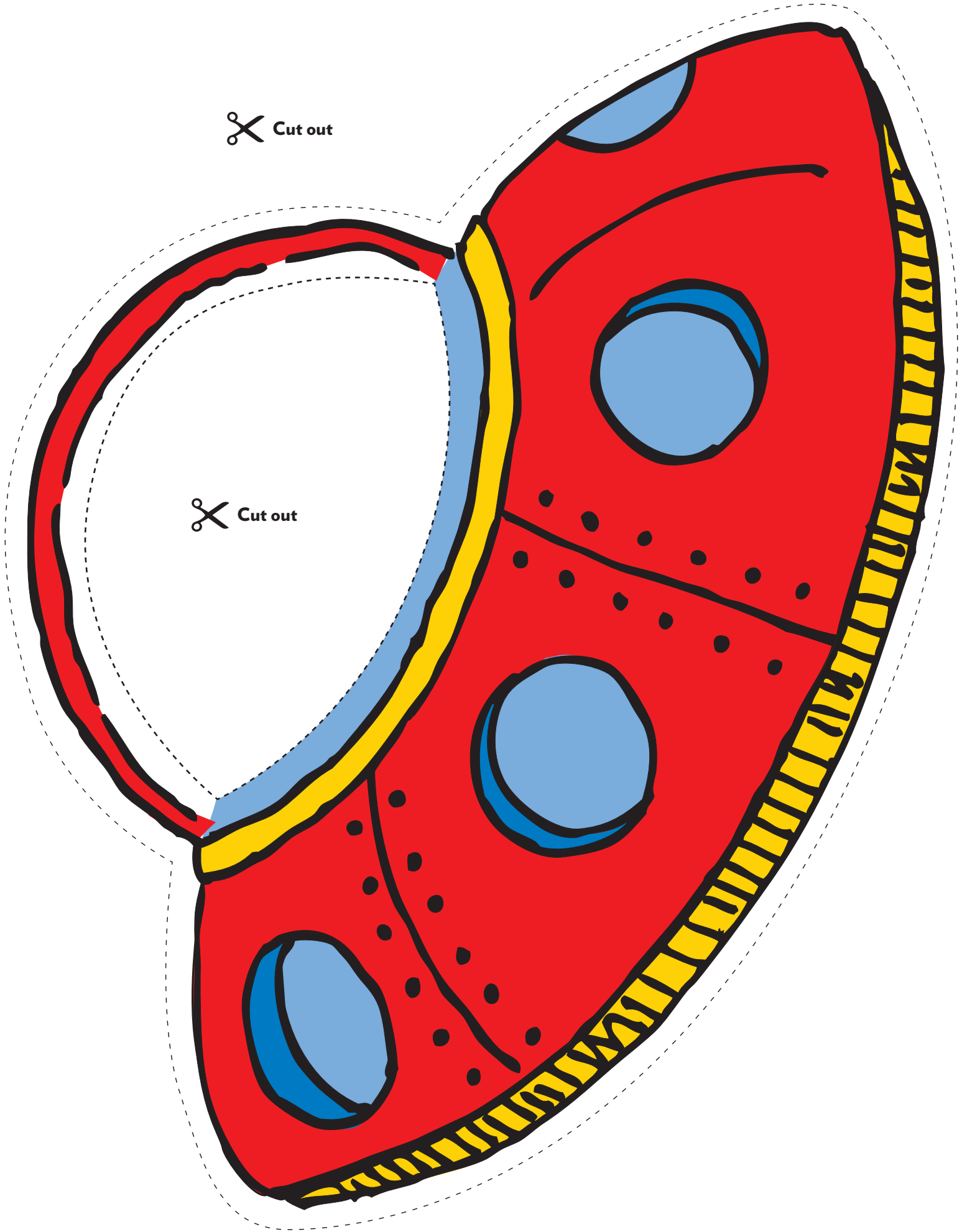


✂ Cut out



✂ Cut out

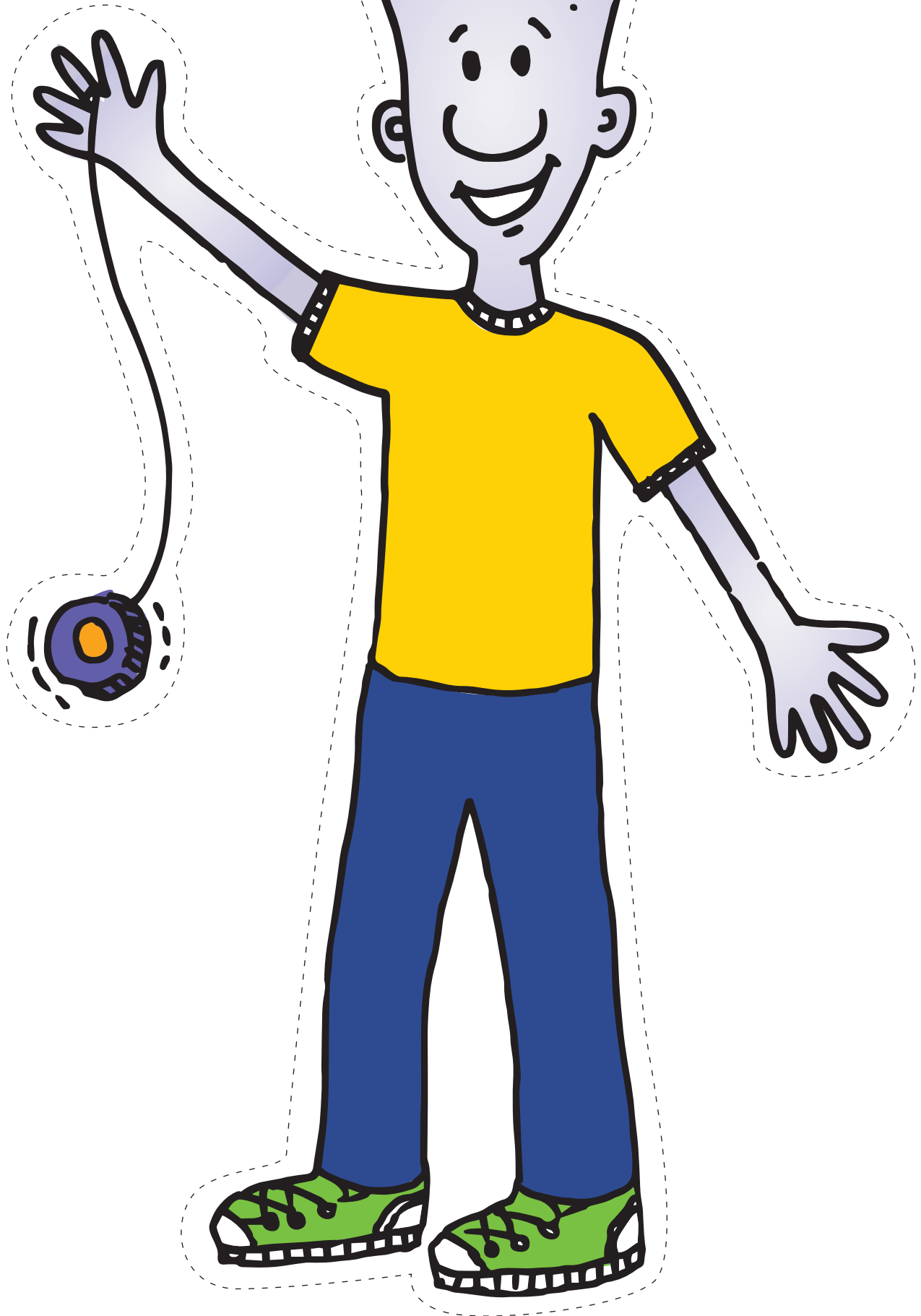
✂ Cut out



✂ Cut out



✂ Cut out



✂ Cut out

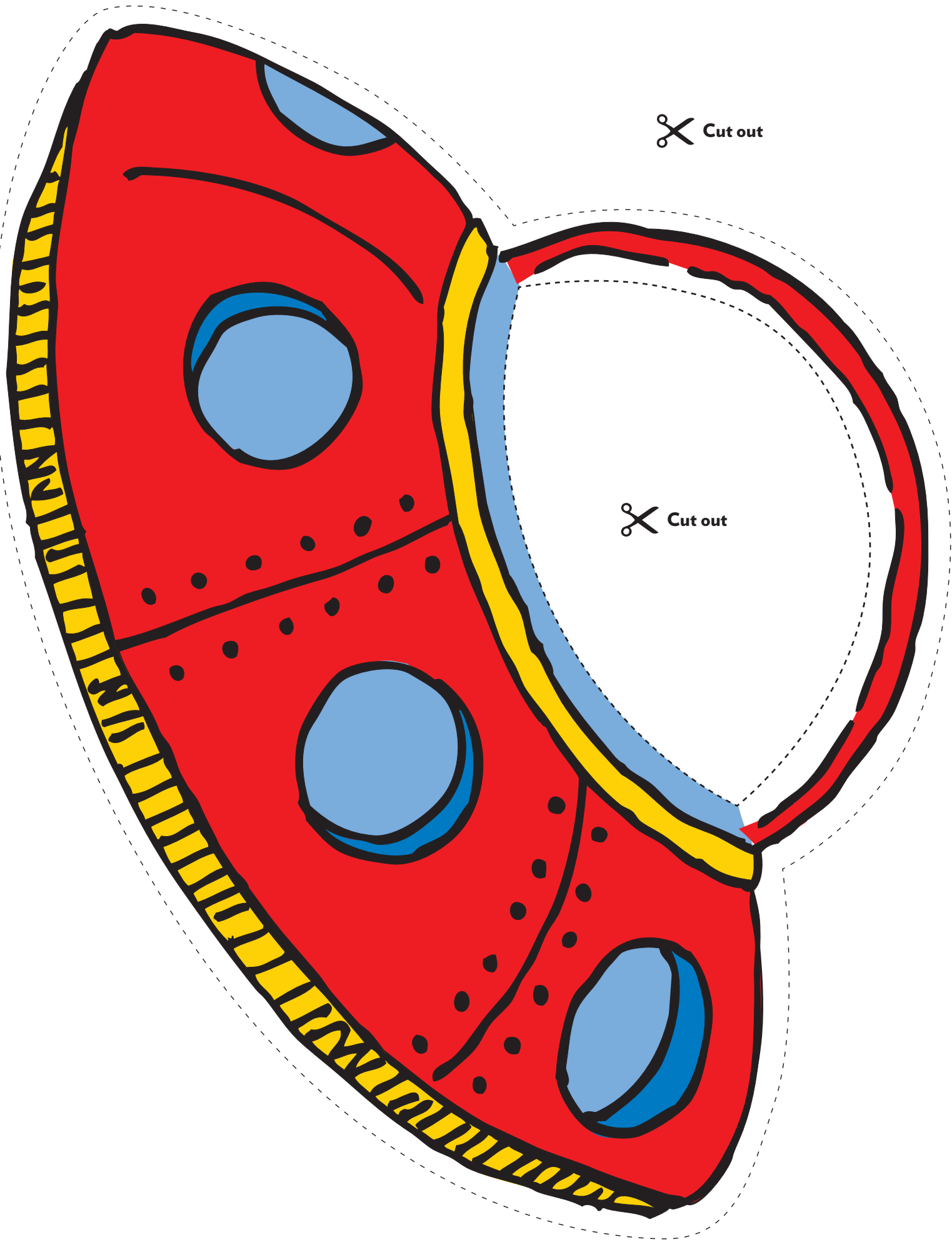


✂ Cut out



✂ Cut out

✂ Cut out

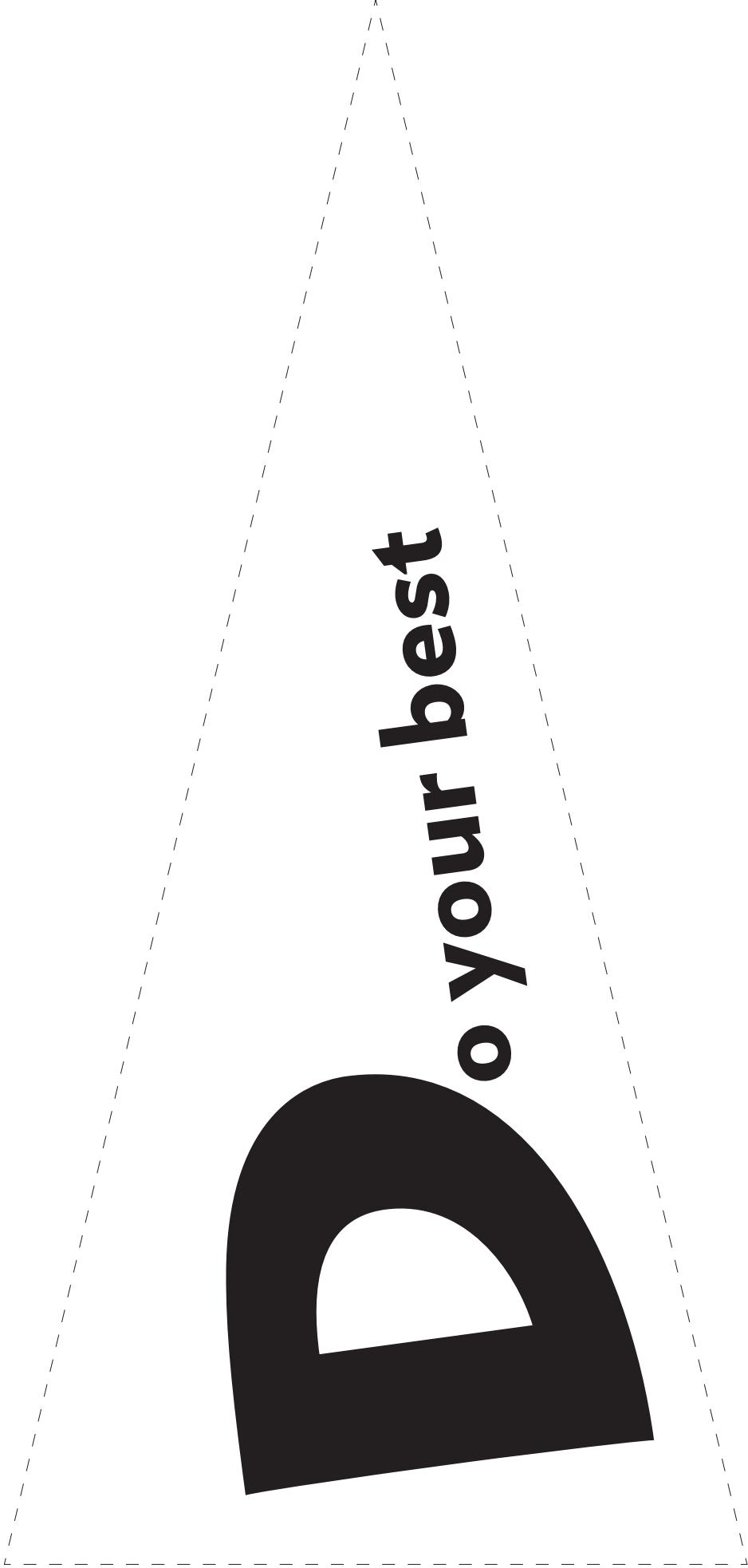


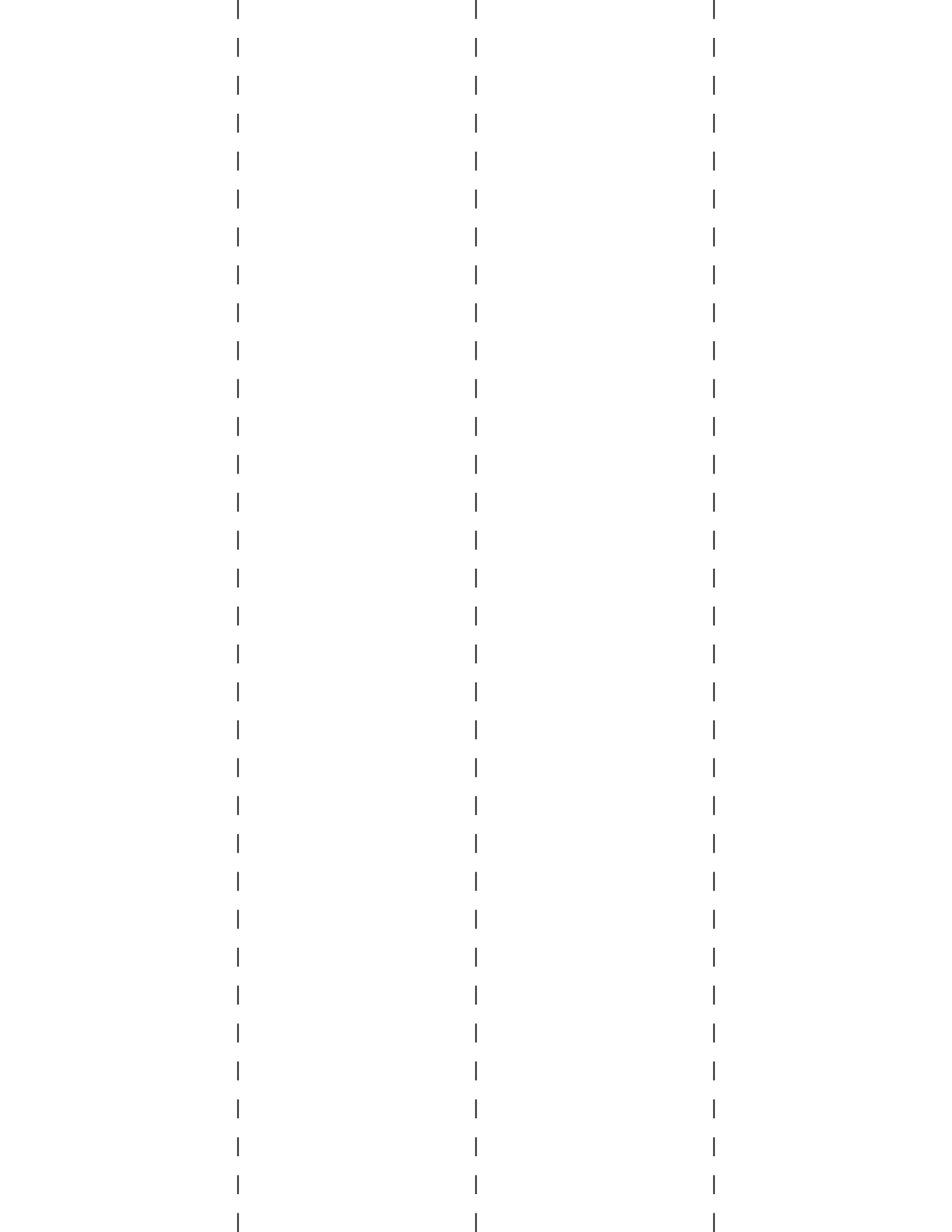
NEVER

**ever
give up**

ENCOURAGE

**ncourage
others**







Line up dotted line to edge of page 15.
Glue or tape together on the back



Overlap
place this strip behind page 15

Puppet Station

Hi Kids!

*Act out scenes from
NED's adventure
or make up a new one!*

